



**CONNECT ON
THE COAST**
Destination planner

2021

“You’ve got something unique and special down here.”

Greg Norris, Director,

The spectacular West Coast inspires and re-energises

There is no place quite like the West Coast or ‘The Coast’ as the locals call it. All along the 600km coast, there are destinations and uniquely West Coast experiences that combine to create memorable events. The area caters best for small to medium sized business events, and the natural environment provides an ideal escape for incentives, conferences, and corporate retreats. There’s always a warm welcome here.



Good things take time

The journey to this incredible slice of New Zealand adds to the experience

Imagine starting your journey with one of the world's most scenic rail journeys through rolling plains, snow-capped mountains, and alongside sparkling lakes. Your group can sit back, relax, and enjoy the views so they arrive feeling rested and inspired.

While traveling by road on the West Coast you'll experience changing landscapes from lashing waves on the spectacularly scenic Great Coast Road to the lush rainforest and glaciers to the south.

Space to switch-off

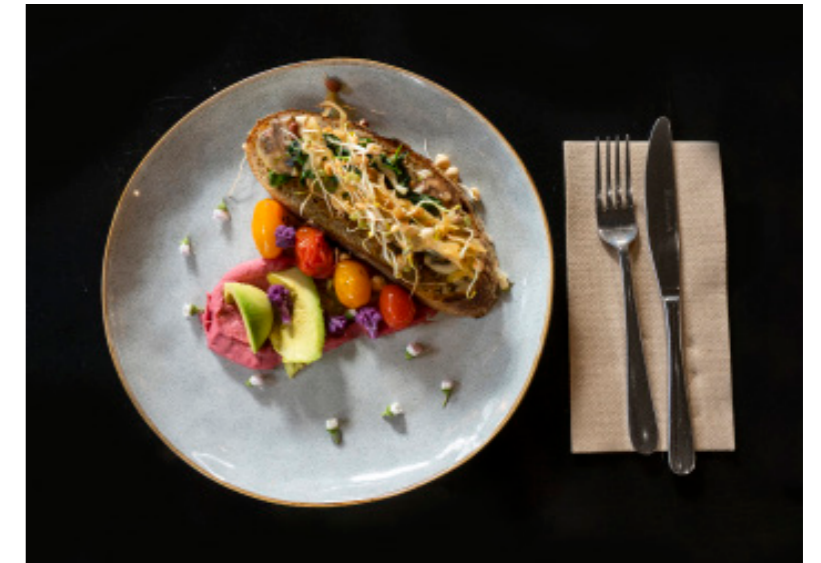
The natural environment of the West Coast provides the perfect place to switch off and reenergise allowing delegates to think of fresh ideas. There's space to stretch legs and minds, with inspiring scenery all around.

Find the perfect place

The diversity of the region means there are destinations to suit all sorts of requirements. Each destination offers something truly unique. Buller and Westland districts are ideal playgrounds for incentives or small business events and Greymouth is the conference hub in the region.

“The complete peace and serenity that you encounter at Franz Josef has to be a highlight.”

Liz Maxwell, Managing Director, ESP



Arrive in style



Catch direct daily flights from Christchurch to Hokitika with Air New Zealand (40 minutes) or from Wellington to Westport with Sounds Air (50 minutes).



Take one of the world's most scenic rail journeys between Christchurch and Greymouth on the Tranz Alpine.



By road the West Coast is 3 hours from Christchurch, Wanaka, Queenstown, Nelson, or Blenheim making it easy to access from two international airports plus regional hubs. From every direction there's stunning scenery, so factor some time for a stop or two.



Did you know?

You can travel from Auckland Airport to Hokitika Airport in a total travel time of 3 hours 10 minutes with Air New Zealand via Christchurch.

Traveling from Hokitika Airport to Franz Josef by road is less than 2 hours, the equivalent of driving from Auckland to Hobbiton.

Wow your group with exclusive use of carriages on the Tranz Alpine from Christchurch or combine a mix of transport modes when traveling from Queenstown or Wanaka. Combine coach travel with jet boating up the Haast River or take to the skies and fly by helicopter or small aircraft to Haast or Franz Josef.



Here to help

Free, impartial advice

Our Business Events Executive is on hand to help you to hold your event on the West Coast, because great events take teamwork. Louise can connect you with the right people to help you create your bespoke business event, this service is completely free!

We can help with:

- Unbiased advice and contacts for venues, accommodations, and service providers.
- Coordination of familiarisation visits and site inspections to help you plan research activities.
- Sample incentive itineraries.
- Pre and post conference tour suggestions.
- Bid preparation assistance
- Imagery and video content production to promote your business event.

Trust the local experts

For on the ground assistance from local experts consult The West Coast Travel Centre team who can coordinate your business event on the West Coast from start to finish. They can make your life easier by providing you with one point of contact and manage all elements of your programme.



West Coast Conferences & Events

The West Coast Conference & Events team has been inspiring and enabling groups, teams, and events on the West Coast for over 25 years. With strong relationships with local operators, insider local knowledge, and a passion for the region, their experienced team are ready to assist. It is their pleasure to share their spirit of Manaakitanga (hospitality) with visitors to the region and to help you design a bespoke programme best suited to your group. Connect with their team of local experts to ensure your event is a success.

West Coast Conferences & Events are part of West Coast Travel and members of TECNZ, TIA, i-SITE NZ. It has a Qualmark accreditation and is part of Sustainable NZ.

Gina Ashworth

03 768 7081 | gina@westcoasttravel.co.nz | westcoastconferences.co.nz



Phillip Barnett



Gina Ashworth



i-SITE Conference 2018

West Coast Conferences & Events successfully managed the New Zealand i-SITE Conference in 2018. The purpose of the conference was to showcase the region's attractions, experiences, and accommodation to some of New Zealand's most influential travel sellers.

'The i-SITE Visitor Information Network is a trusted and influential brand for visitors and locals alike. The more our i-SITE operators know about a region and its products, the better they can sell it to visitors looking to experience more of New Zealand says Paul Yeo, i-SITE Executive Manager.

125 delegates from across New Zealand attended the three-day event which commenced with a traditional pōwhiri at Arahura Marae and included conference sessions at The West Coast Events Centre at Shantytown Heritage Park, plus familiarisation visits showcasing the best visitor experiences in the local area. The conference concluded with a gala dinner at Shantytown Heritage Park showcasing the best of West Coast kai and Coaster hospitality.

The conference programme was hosted at the West Coast Events Centre with its unique mix of modern facilities with West Coast charm.

The West Coast Conferences and Events team oversaw the conference schedule, the familiarisation programme, and created a spectacular gala night. They also managed delegates accommodation and travel requirements.

“We all felt the inspiring nature of this untamed, natural, wilderness Tai Poutini was a large part of the conference's success.”

Infrastructure on the West Coast offered modern and spacious venues with great connectivity, while still retaining the famous West Coast charm you find anywhere else.

On the final evening gala night delegates reflected on the personal development achieved over the three days. They all felt the inspiring nature of this untamed, natural, wilderness Tai Poutini was a large part of the conference's success.



INSPIRING

One coast, three districts

Buller in the north, Grey mid-coast,
and Westland to south

Each district has its own character and charming towns with welcoming locals. At almost 600km long the West Coast region is a place you can visit multiple times, yet no visit will be the same. We have several key destinations for business events allowing you to choose the most suitable destination for your group.

Grey district is the main conference hub and the gateway for the Tranz Alpine. Buller to the north and Westland to the south have fantastic activity offerings and dining experiences which are ideal for incentive programmes and team building.



Buller

Home to the spectacularly scenic Great Coast Road, just driving around Buller is inspiring. This rugged area of the West Coast is an incentive destination dream with activities and experiences galore for small to medium sized groups.

For small incentive groups looking for a truly special experience meet with the Reefton twins Nigel and Steffan, Reefton Distilling Co.'s ambassadors and

prospectors. Join them in the rainforest to forage for the West Coast botanicals that help create Reefton Distilling Co.'s award-winning spirits.

For groups seeking an adventure we recommend joining Underworld Adventures to raft through caves and chambers flanked by stalactites, stalagmites and a sparkling galaxy of glow worms.



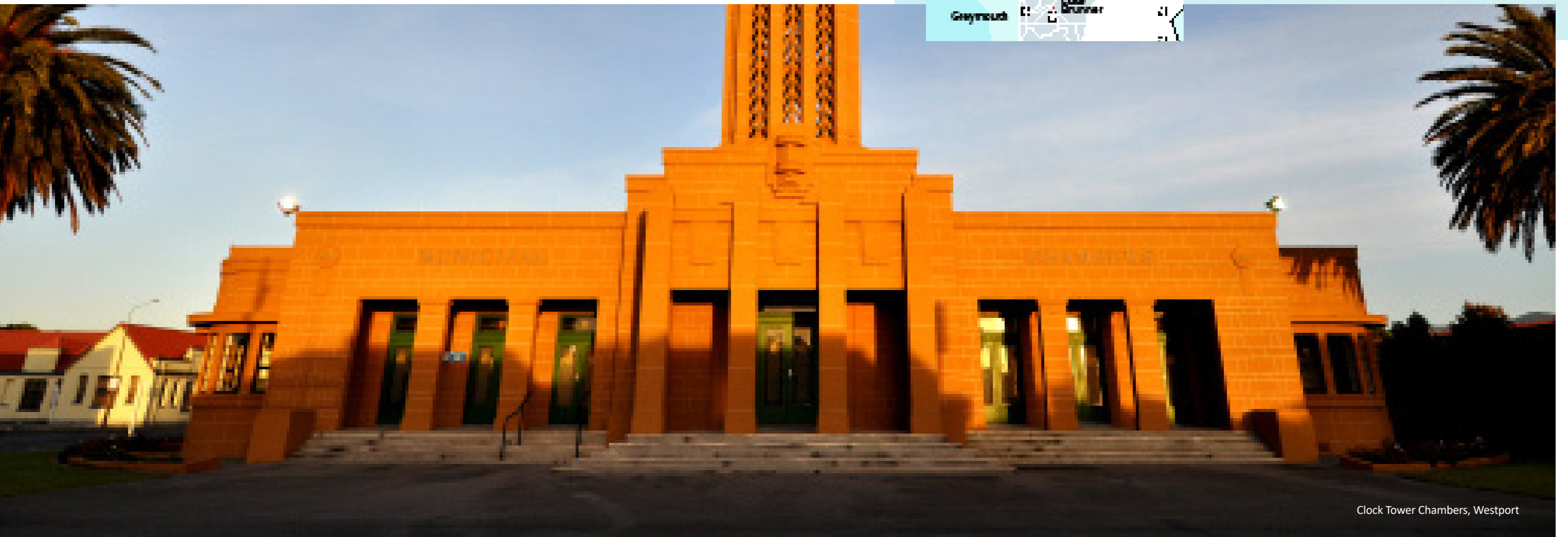
Driving times in Buller

Westport Airport to CBD: 7 minutes

Westport to Punakaiki: 50 minutes

Westport to Reefton: 1 hour

Westport to Greymouth: 1 hour 30 minutes



Clock Tower Chambers, Westport

Sample Incentive Itinerary: Buller

3 days / 2 nights sample incentive itinerary

Day 1

Morning: Enjoy panoramic views aboard the Tranz Alpine from Christchurch to Greymouth in Scenic Plus Class. Breakfast, a light lunch, and a cheese platter are included. Simply sit back, relax, and enjoy the views while dining on the finest New Zealand produce.

Afternoon: Get active with a paddle board or kayak trip on the Pororari River. The scenery is majestic no matter the weather!

Evening: Check in to the picturesque Punakaiki Resort for some unwinding time before dinner with sweeping views of the Tasman Sea.

Day 2

Join Barrytown Knifemaking to forge blades from red hot steel. Complete your own knives with a native timber handle, brass bolsters and pins for

new skills and a unique souvenir. This full day experience always gets fantastic feedback.

Then relax and embrace the West Coast way with a barbecue and a bonfire on the beach. Share delicious local produce like the Blackball Salami Company's patties and sausages washed down with local craft beer or Reefton Distilling Co.'s award-winning Little Biddy gin.

Day 3

Morning: Join a local guide for a tour of one of the West Coast's geological wonders, the Pancake Rocks and Blowholes.

Afternoon: Pop in to Monteith's Brewery in Greymouth for a guided tour and tasting followed by a hearty lunch. From here, it's a short trip south to Hokitika Airport for an early evening departure.



Punakaiki Resort



SUP on the Pororari River



Maruia Hot Springs

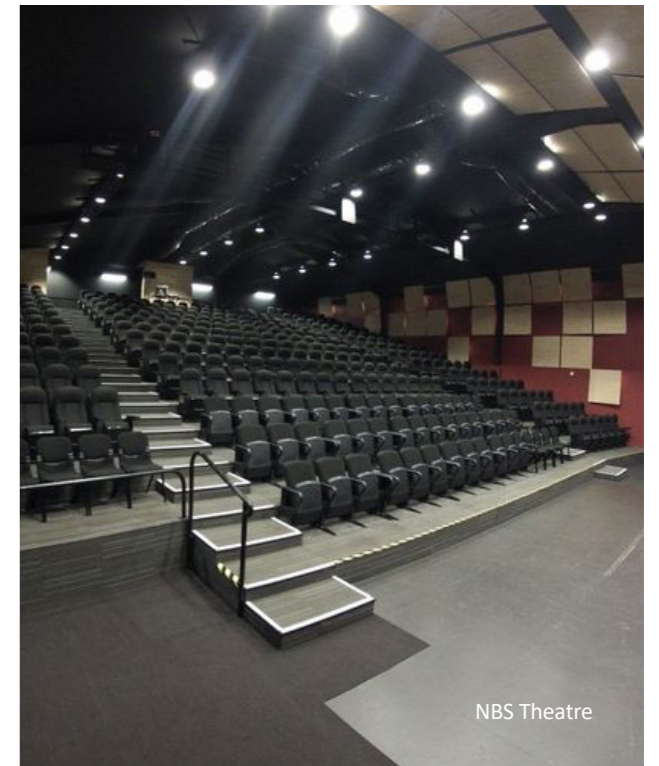
Accommodation

Accommodation	Room	Location	Type	Rating	Facilities
Punakaiki Resort	58	Punakaiki	Hotel	4*	Parking, restaurant
Maruia Hot Springs	27	Maruia	Hotel	4*	Parking, restaurant, spa
Westport Motor Hotel	27	Westport	Hotel	4*	Parking, restaurant
ASURE Chelsea Gateway Motor Lodge	20	Westport	Motel	4*	Parking
Bella Vista Motel Westport	18	Westport	Motel	4*	Parking, breakfast service
Westport Motels	17	Westport	Motel	3*	Parking, kitchen
Buller Bridge Motel	17	Westport	Motel	3*	Parking, breakfast service
Buller Court on Palmerston	15	Westport	Motel	3*	Parking, breakfast service
Ascot Motor Lodge	12	Westport	Motel	3*	Parking
Carters by the Sea	10	Westport	Motel	4*	Parking, kitchenette
Palm Court Motel	10	Westport	Motel	3*	Parking, kitchenette

For further accommodation options click [here](#).

Venue guide

Venue	Capacity
NBS Theatre	359
Pulse Energy Centre	300
Club Buller	150
Reefton Cinema	110
The Last Resort	96



NBS Theatre



Greymouth

Grey

Driving times in Grey

- Railway Station to CBD: 1 minute
- To Hokitika Airport: 35 minutes
- To Punakaiki: 35 minutes
- To Westport Airport: 1 hour 30 minutes
- To Franz Josef: 2 hours 30 minutes

Grey's charming capital, Greymouth, is the conference hub of the West Coast and the final destination on the Tranz Alpine from Christchurch. The West Coast Events Centre at Shantytown Heritage Park is the largest conference venue in the region and there is a good selection of accommodations and restaurants for delegates to enjoy.

Monteith's Brewery is an icon of the West Coast and can accommodate up to 200 people for events such as meetings, tours and tastings, and group dining. You can hire the entire venue, or a private section, whichever works best for your group. Monteith's Brewery provides a flexible venue, varied catering options including famous West Coast whitebait patties, and a friendly West Coast welcome.

The West Coast Events Centre

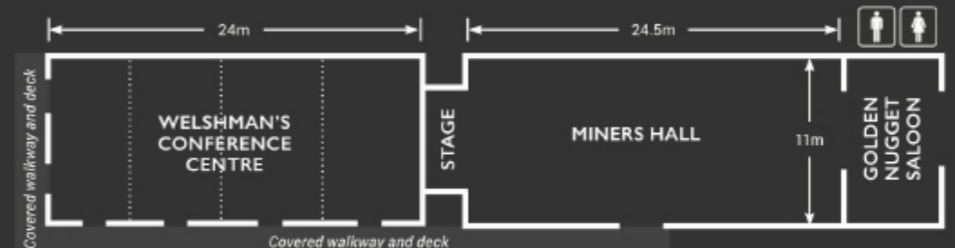
The West Coast Events Centre at Shantytown Heritage Park is the largest conference facility on the West Coast. With on-site catering, a fully licenced bar, and large car parks this venue can accommodate a variety of business events including conferences, meetings, tradeshows, and gala dinners.

Facilities :


-  Wi-Fi
-  Gold Panning
-  Licensed Bar
-  On-Site Catering
-  A/V Hire
-  Old Time Photo Services
-  Steam Train Rides
-  Complimentary entry to the heritage attractions

MAXIMUM ROOM CAPACITY

	Room Area m ²	Theatre	Cocktail	Classroom	Banquet
Miners Hall	270	350	350	150	250
Welshman's 1, 2, 3 or 4	66	60	75	25	-
Welshman's Full Room	264	250	300	150	220



• Welshman's can be divided into FOUR cells.

 **Driving times from West Coast Events Centre**
To Greymouth: 10 min | To Hokitika: 25 min



“ Organising a conference from afar can be challenging, but the team at The West Coast Events Centre made it easy and seamless with great communication and advice.

EFFICIENT
AND HELPFUL

down to the smallest detail, they organised everything from AV and theming, to on the day assistance for smooth running.”

Jodi Turton, Events Manager Straterra Inc, Wellington

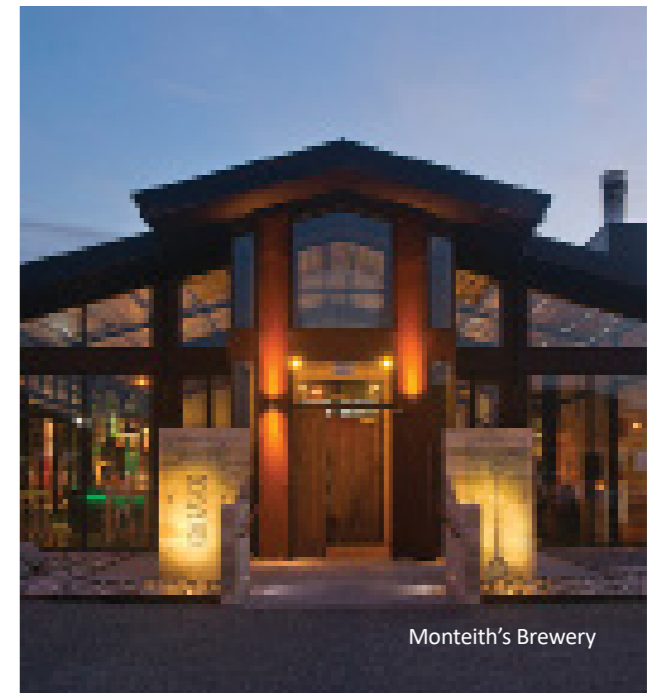
Accommodation

Accommodation	Room	Location	Type	Rating	Facilities
The Ashley Hotel	60	Greymouth	Hotel	4*	Parking, restaurant, meeting room
Recreation Hotel	30	Greymouth	Hotel	3*	Parking, restaurant
Charles Court Motel	24	Greymouth	Motel	3*	Parking, kitchenette, outdoor pool (seasonal)
Coleraine Suites + Apartments	22	Greymouth	Apartments	4*	Parking, meeting room
Hotel Lake Brunner	21	Moana	Hotel	4*	Parking, restaurant, meeting room
Bella Vista Greymouth	18	Greymouth	Motel	4*	Parking, kitchenette
Paroa Hotel	17	Greymouth	Motel	3*	Parking, restaurant, meeting room
Scenicland Motels	14	Greymouth	Motel	4*	Parking
Aachen Place Motel	13	Greymouth	Motel	3*	Parking, breakfast service
Alpine Rose Motel	12	Greymouth	Motel	4*	Parking, kitchenette
Gables Motor Lodge	12	Greymouth	Motel	3*	Parking, kitchenette
Asure Highpark Motor Inn	11	Greymouth	Motel	3*	Parking, breakfast service

For further accommodation options click [here](#).

Venue guide

Venue	Capacity
West Coast Events Centre	600
Regent Theatre	468
Monteith's Brewery	240
Rata View	100
Ashley Hotel	60
Hotel Lake Brunner	50



Monteith's Brewery

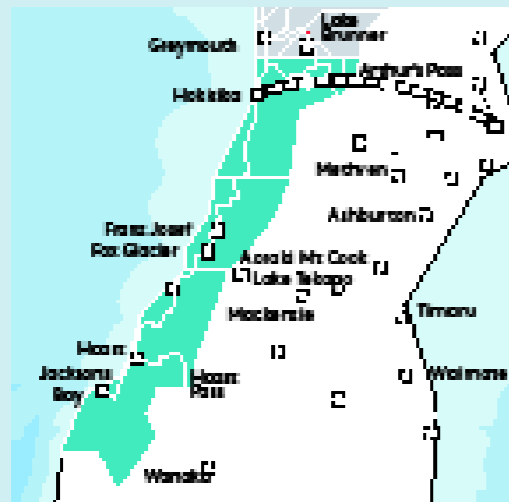


Hotel Lake Brunner

Westland

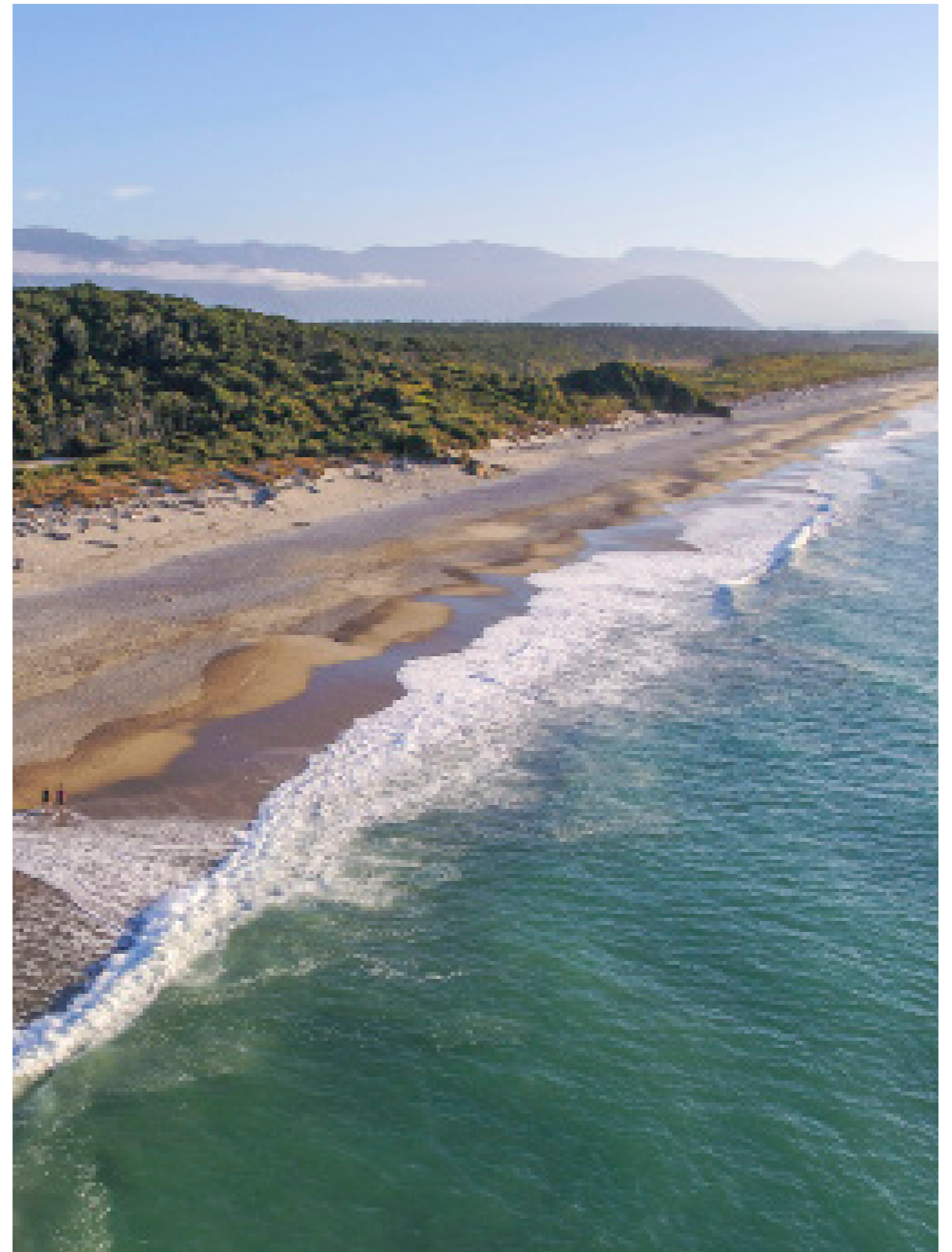
Westland is the largest of the three districts and is home to the iconic Fox and Franz Josef Glaciers and the UNESCO World Heritage area at Haast. This district has a lot to offer and with direct daily flights from Christchurch to Hokitika Airport with Air New Zealand getting here is easy. Glacier Country has the largest accommodation

offering on the West Coast making it ideal for larger groups who would like to stay in one accommodation. With an abundance of activities including glacier experiences plus a variety of dining experiences the area is perfect for incentives. This district works well for small to medium sized meetings and conferences in Hokitika and Glacier Country.



Driving times in Westland

- Hokitika Airport to Hokitika CBD: 3 minutes
- Hokitika to the West Coast Events Centre: 25 minutes
- Hokitika to Greymouth: 35 minutes
- Hokitika to Franz Josef: 2 hours
- Franz Josef to Haast: 2 hours





Sample Incentive Itinerary: Westland

3 days / 2 nights sample incentive itinerary

Day 1

Morning: Enjoy panoramic views aboard the Tranz Alpine from Christchurch to Greymouth in Scenic Plus Class with breakfast, a light lunch, and a cheese platter included. Simply sit back, relax, and enjoy the views while dining on the finest New Zealand produce.

Afternoon: visit the iconic Monteith's Brewery and enjoy the West Coast's flagship beer and some delicious snacks before traveling by coach to Franz Josef.

Evening: check into Rainforest Retreat and unwind in your tree lodge before enjoying dinner at Monsoon Bar & Restaurant.

Day 2

Morning: Take to the skies with a scenic helicopter flight and a snow landing on Franz Josef Glacier. From the glacier you can admire the spectacular views from the majestic Southern Alps to the Tasman Sea with rainforest in between. You will fly from alps to ocean, hop on some quad bikes and take a guided tour by the glacial river before enjoying morning tea by a bonfire on the beach.

Afternoon: Breaking into smaller groups, people will enjoy their pre-selected activities. Some of the group will kayak on the mirror-like Lake Mapouriki with Franz Josef Wilderness Tours, some will relax at hot pools, and others will go behind the scenes at the West Coast Wildlife Centre to see the Kiwi hatching and incubation facility and Tuatara encounter.

Evening: Taking inspiration from the Hokitika Wildfoods Festival, you will enjoy a banquet of West Coast delicacies.

Day 3

Morning: travel south to Haast and take a jetboat ride on the Haast River, a great experience whatever the weather. On sunny days you can marvel at the bright blue river and lush forest and its equally spectacular during rain with the waterfalls in full flow and mist shrouding the forest.

Afternoon: enjoy lunch at a traditional West Coast pub before flying on small planes to Queenstown Airport. This flight provides a birds eye view of the breathtakingly beautiful UNESCO World Heritage Site.



Accommodation

Accommodation	Room	Location	Type	Rating	Facilities
Rainforest Retreat	200	Franz Josef	Hotel, Motel, Backpackers	4* Plus	Parking, restaurant, hot tub
Scenic Hotel Franz Josef Glacier	130	Franz Josef	Hotel	4*	Parking, restaurant, meeting room, lounge
Beachfront Hotel	65	Hokitika	Hotel	4*	Parking, restaurant, meeting room
Heartland Hotel Haast	54	Haast	Hotel	3*	Parking, restaurant
Sunset Motels	25	Fox Glacier	Motel	3*	Parking
Wilderness Lodge Lake Moeraki	24	Moeraki	Lodge	4* Plus	Parking, restaurant, lounge, activities
Bella Vista Fox Glacier	24	Fox Glacier	Motel	4*	Parking, breakfast service
Alpine Glacier Motel	24	Franz Josef	Motel	4*	Parking
Distinction Fox Glacier Te Weheka Hotel	20	Fox Glacier	Motel	4* Plus	Parking, restaurant, lounge
Franz Josef Oasis	20	Franz Josef	Motel	4*	Parking
Punga Grove	20	Franz Josef	Motel	4*	Parking
High Peaks Hotel	19	Fox Glacier	Motel	3*	Parking
Bella Vista Motel - Franz Josef	18	Franz Josef	Motel	4*	Parking, breakfast service
Glenfern Villas	18	Franz Josef	Apartments	4* Plus	Parking
Bella Vista Hokitika	16	Hokitika	Motel	4*	Parking, breakfast service
58 On Cron	16	Franz Josef	Motel	3*	Parking
Theatre Royal Hotel	15	Kumara	Hotel	4*	Parking, restaurant, lounge
Heritage Highway Motel	14	Hokitika	Motel	3*	Parking

For further accommodation options click [here](#).



Wilderness Lodge Lake Moeraki



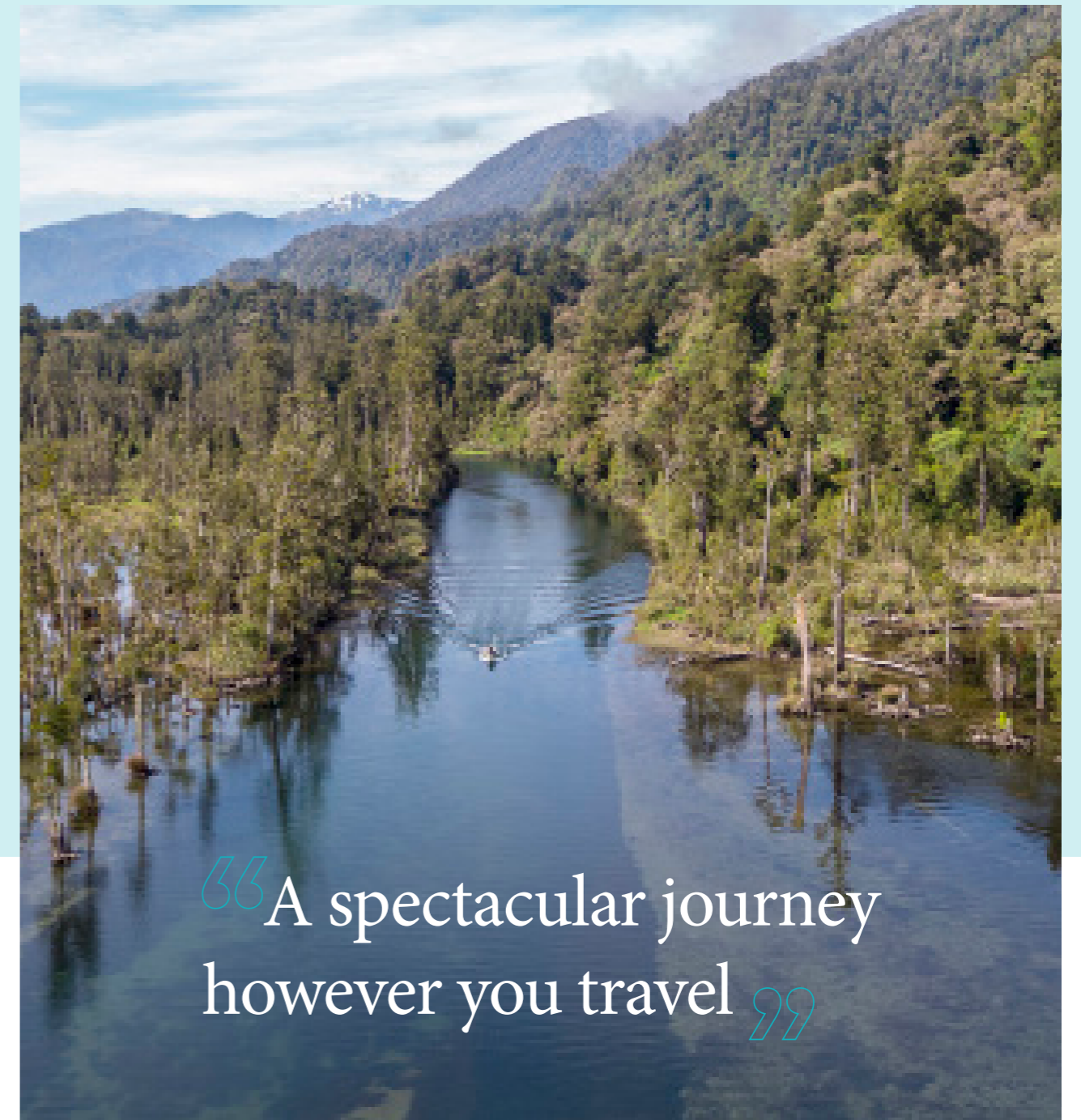
Distinction Fox Glacier Te Weheka Hotel

Venue guide

Venue	Capacity
Regent Theatre	382
Monsoon Bar & Restaurant	130
Scenic Hotel Franz Josef Glacier	120
Alpine Adventure Centre	80
Beachfront Hotel	70



Rainforest Retreat



“A spectacular journey however you travel”

Pre and post conference

Our vast region provides a diverse destinations and activities for delegates to explore pre or post conference. For delegates seeking to explore one of New Zealand’s most spectacular natural environments the region is home to five national parks and a UNESCO World Heritage site.

It is easy to explore an area vastly different to the conference location on the West Coast. For example, if conferencing in Greymouth, you can travel just 30 minutes to see the iconic Punakaiki Pancake Rocks and Blowholes or visit Lake Brunner.

For delegates attending conferences in Christchurch and Queenstown, the West Coast region can be reached in just 3 hours by car. We recommend allowing extra time on any journey because you will want to stop to admire the views.

For help coordinating pre or post conference itineraries reach out to our local experts, West Coast Travel Services.



Driving times

Christchurch to Maruia Hot Springs:
2 hours 30 minutes

Christchurch to Greymouth or Hokitika:
3 hours 15 minutes

Queenstown to Haast: 2 hours 50 minutes



West Coast Venue Guide

There's a welcoming place for everyone on the West Coast.

Venue	Capacity	Location	Contact Details
The West Coast Events Centre	650	Greymouth- Grey	03 7626634 events@westcoasteventscentre.co.nz
Regent Theatre	468	Greymouth- Grey	03-768 0920 manager@regentgreymouth.co.nz
Regent Theatre	382	Hokitika - Westland	03 755 8101 manager@hokitikaregent.com
NBS Theatre	359	Westport- Buller	03 789 4219 info@nbstheatre.co.nz
Pulse Energy Centre	300	Westport - Buller	03-789 8316 reception@perc.nz
Monteith's Brewery	240	Greymouth- Grey	03 768 4149 hospo@thebrewery.co.nz
Club Buller	150	Westport - Buller	03-789 8770 manager_clubbuller@xtra.co.nz
Monsoon Bar & Restaurant	130	Franz Josef- Westland	03 752 0220 hello@rainforest.nz
Scenic Hotel Franz Josef	120	Franz Josef- Westland	03 752 0729 karenr@scenicgroup.co.nz
Reefton Cinema	110	Reefton - Buller	03 732 8391 rvinfo@xtra.co.nz
Rata View	100	Barrytown - Grey	rataview@gmail.com
The Last Resort	96	Karamea - Buller	03 -782-6617 enquiries@lastresortkaramea.co.nz
Ashley Hotel	60	Greymouth- Grey	03 768 5135 info@hotelashley.co.nz
Alpine Adventure Centre	80	Franz Josef - Westland	03 752 0793 gm@heliservices.nz
Beachfront Hotel	70	Hokitika - Westland	03 755 8344 reservations@beachfronthotel.co.nz

Additional Services



Transport

Name

Contact Details

[East West Coaches](#)

027 201 8825 | book@eastwestcoaches.co.nz

[Glacier Shuttles & Charters](#)

0800 999 739 | info@glaciershuttlescharters.co.nz

[Leopard Coachlines](#)

03 373 8100 | sales@leopard.co.nz

For taxis and car rentals click [here](#).



Photographers

Name

Contact Details

[Jules Anderson](#)

027 247 8025 | julesanderson@xtra.co.nz

[Jase Blair](#)

021 24 55 240 | Jase@katabatic.co.nz

[Stewart Nimmo](#)

03 768 6499 | photos@stewartnimmo.co.nz



Videographers

Name

Contact Details

[Coastwide Films](#)

0274 429 882 | deantrolle2@gmail.com

[VisionCo](#)

021 224 7755 | dave@visionco.co.nz

[Weka Films](#)

027 660 7366 | Andrew@wekafilms.co.nz





CONTACT

For more information please contact
our Business Events Executive
businessevents@dwc.org.nz | 03 769 7000